

MODEL 95



Features

- Largest one-piece housing design with integrated strainer basket and easy on/off two piece lid.
- Quiet and efficient medium head pump performance.
- This high performance pump comes complete with our unique mechanical shaft seal that allows the pump, if mistreated, to run dry for up to one hour.
- The pump can be used for pool water with a salt concentration of up to 5000 ppm.
- Suction and discharge are equipped with 4" quick disconnect unions for easy installation and maintenance.
- Wrench for unions and lid is included with each pump. Flanges are available on request.
- Motor is easy to remove without disturbing the plumbing. Reusable o-rings throughout.
- Available with a heavy duty energy efficient totally enclosed fan cooled (TEFC) motor design. (*Model 95-IX & Model 95-X requires a motor starter.*)
- Two year warranty on the motor and all pump parts, including normal wear of the mechanical seal.
- Every pump is performance tested before leaving the Speck factory.



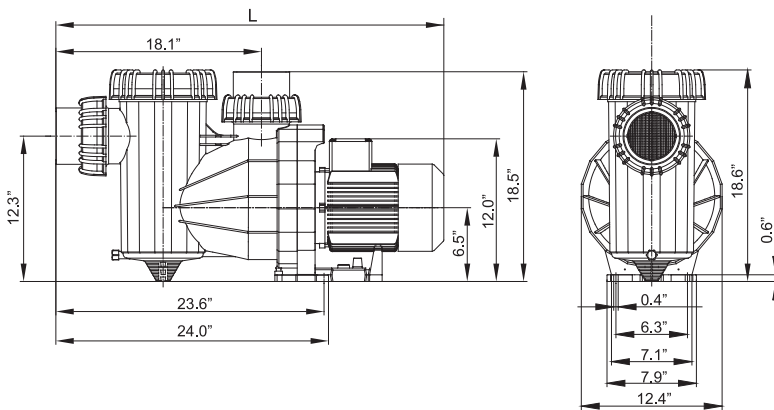
Model 95-X



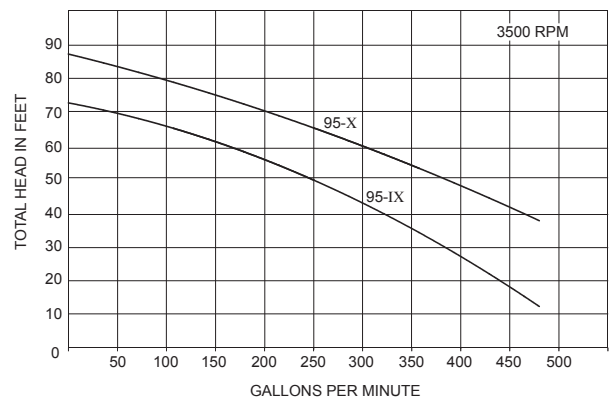
Applications

- In-ground pools
- High rate sand filter applications
- Water Features

Dimensional Drawing



Performance Curves



Technical Data

ORDER #	MODEL	FULL RATE HP	FULL RATE S.F.	FULL LOAD AMPS	S.F. AMPS	VOLTS	MOTOR/FRAME	SPEED	DIMENSION "L"	SHIPPING WEIGHT
IG274-1500F-000	95-IX (1PH)	5.0	1.15	24.9-23.0	26.0	208-230	TEFC	112	single	140 lbs.
IG273-1500F-000	95-IX (3PH)	5.0	1.15	15.0-14.5/7.5	17.2-16.6/8.6	208-230/460	TEFC	112	single	100 lbs.
IG273-1750F-000	95-X (3PH)	7.5	1.15	19.0-18.0/8.9	22.0-20.0/10.0	208-230/460	TEFC	112	single	141 lbs.

NOTE: TEFC motors are not thermally protected and requires a motor starter.